

Eco-driving Trajectory Planning of a Heterogeneous Platoon in Urban Environments^{*}

Hao Zhen^{*}, Sahand Mosharafian^{**}, Jidong J. Yang^{*},
Javad Mohammadpour Velni^{**}

^{*} School of Environmental, Civil, Agricultural & Mechanical
Engineering, University of Georgia, Athens, GA 30602, USA

^{**} School of Electrical & Computer Engineering, University of Georgia,
Athens, GA 30602, USA

Abstract: Given the increasing popularity and demand for connected and autonomous vehicles (CAVs), Eco-driving and platooning in highways and urban areas to increase the efficiency of the traffic system is becoming a possibility. This paper presents an Eco-driving trajectory planning approach for a platoon of heterogeneous electric vehicles (EVs) in urban environments. The proposed control strategy for the platoon considers energy consumption, mobility and passenger comfort, with which vehicles may pass signalized intersections with no stops. For a given urban route, first, the platoon's leader vehicle employs dynamic programming (DP) to plan a trajectory for the anticipated path with the aim of balancing energy consumption, mobility and passenger comfort. Then, other following CAVs in the platoon either follow the preceding vehicles, using a PID-based cooperative adaptive cruise control, or plan their own trajectory by checking whether they can pass the next intersection without stopping. Furthermore, a heavy vehicle that cannot efficiently follow a light-weight vehicle would instead employ the DP-based trajectory planner. The results of simulation studies demonstrate the efficacy of the proposed control strategy with which the platoon's energy consumption is shown to reduce while the mobility is not compromised.

Keywords: Eco-driving, heterogeneous platoon, cooperative adaptive cruise control, trajectory planning, electric vehicles, connected and autonomous vehicles

1. INTRODUCTION

Driver assistant equipment in modern vehicles has been used to facilitate driving by performing repetitive tasks such as stop and go while reducing fuel consumption and improving safety (Moser et al., 2015). More advanced driver assistance systems are capable of enhancing the traffic system by increasing the road capacity (Bengler et al., 2014). The emerging connected and autonomous vehicle (CAV) technologies offer an unprecedented opportunity to enable Eco-driving and platooning in different traffic environments to maximize the efficiency of traffic systems. It is noted by Huang et al. (2018) after training drivers for Eco-driving behaviors or using Eco-driving advisory devices in human-driven vehicles, immediate and noticeable reduction on CO_2 emission and fuel consumption have been observed while traveling time has slightly increased. However, the Eco-driving skills gained from training are not likely to be sustainable as human driving habits are heterogeneous and formed over years, resulting in diminishing positive impacts on energy consumption over time. Instead, autonomous driving systems can be designed and leveraged to enable enduring and successful Eco-driving.

Sanguinetti et al. (2017) categorized Eco-driving behaviors into six classes: route planning, driving behavior,

maintenance, comfort, fueling and load management. Our study leverages autonomous driving to improve energy consumption and mobility by focusing on two specific aspects: route planning and driving behavior. It was noted that although Eco-driving might not negatively impact safety, it could result in driving with relatively low speed, and thereby increase traveling time (Wu et al., 2015). As such, recent studies have been focused on balancing energy consumption and mobility (Oh and Peng, 2018; Ma et al., 2021). Different from the existing research being concentrated on Eco-driving in different mixed traffic conditions over a short distance (e.g., see (Zhao et al., 2018)), the focus of our study is on long-term trajectory planning for a platoon of heterogeneous electric vehicles (EVs) considering energy consumption, mobility and passenger comfort in urban environments.

CAV technologies are capable of enhancing sustainability and improving safety and mobility (Wang et al., 2019). Wireless communication among CAVs enables cooperative adaptive cruise control (CACC), which allows safe driving with a smaller gap between vehicles (Mosharafian et al., 2021; Wang and Nijmeijer, 2015; Kreuzen, 2012). Different control methods are used to implement CACC, namely model predictive control (MPC)-based methods and proportional-derivative/proportional-integral-derivative (PD/PID) controllers. It has been shown that Eco-driving

^{*} This work was partially supported by the US National Science Foundation under award number CNS-1931981.

using the knowledge about traffic signal timing can further decrease energy consumption in the urban environment compared to the situation without such information (Teichert et al., 2020), in which unnecessary braking and idling at intersections can increase energy consumption (Oh and Peng, 2018). In the existing literature, the impact of combining Eco-driving and CACC at signalized intersections (a.k.a. Eco-CACC) has been investigated (Yang et al., 2016; Wang et al., 2019). While some previous works considered single-intersection scenarios, others studied a corridor setting that includes multiple intersections. Although Wang et al. (2019) studied a scenario including numerous signalized intersections, their Eco-driving planning is only conducted for the upcoming intersection but not the entire path. Ma et al. (2021) considered Eco-driving-based CACC in a path with multiple intersections while planning the speed trajectory for the entire route. However, their proposed solution is not useful for those vehicles in the platoon that cannot pass the traffic light. In this situation, the leader would slightly change its trajectory to allow all following vehicles to pass the traffic light during the green phase. This would result in a sub-optimal solution, even for the vehicles that can pass the traffic light following the claimed “optimal” trajectory. Moreover, this approach would no longer work for a longer platoon, as stopping at the traffic light for some vehicles is inevitable.

Heterogeneity of the platoon may affect the platoon’s stability, efficiency and mobility. Some researchers have been studying the heterogeneity from different aspects, e.g., heterogeneity of mixed platoon by modeling the interaction between human-driven vehicles and CAVs (Jia et al., 2018), and Eco-CACC of a heterogeneous platoon of heavy-duty vehicles with a time delay from the perspective of internal stability and string stability (Zhai et al., 2020). However, there is less concentration on the trajectory planning of heterogeneous platoons, to the best of our knowledge. In this paper, the Eco-CACC problem is studied for a platoon of heterogeneous electric vehicles in an urban environment setting. The traveling route for the platoon includes multiple signalized intersections whose signal timings are available to the platoon through Vehicle-to-infrastructure (V2I) communication. The proposed trajectory planning for vehicles allows each CAV to either follow its predecessor using a PID-based CACC approach or use the route, signal and traffic information to re-design its own trajectory instead, which is found by solving a dynamic programming (DP) problem. The proposed approach allows all CAVs to pass traffic lights with no stops while balancing energy consumption, mobility and passenger comfort. The contributions of the paper are summarized as follows.

- (1) An Eco-CACC strategy is proposed for a platoon of heterogeneous electric vehicles in urban environments, a general scheme that can be adapted to various situations such as different platoon sizes and different route settings.
- (2) Heterogeneity of a platoon is considered by specifying light-weight vehicles versus heavy-duty vehicles, which exhibit different performance characteristics.
- (3) The global optimal trajectory of leading vehicles is determined by solving an optimization problem using DP algorithm aiming at striking a balance

between energy consumption, mobility and comfort while other vehicles employ PID to follow their preceding vehicle.

The remainder of the paper is organized as follows. The vehicle model considered in this study is explained in Section 2. The proposed Eco-CACC strategy is discussed in Section 3. Simulation results and discussions are presented in Section 4, and finally, concluding remarks are provided in Section 5.

2. SYSTEM MODEL

In this paper, we address the problem of finding an Eco-CACC strategy for a heterogeneous CAV platoon traveling along an urban arterial with multiple traffic lights. The following assumptions are made throughout the paper:

- (1) Only longitudinal control of CAVs is considered.
- (2) There is no overtaking, and other vehicles do not cut in the CAV platoon.
- (3) All CAVs in platoon are also EVs and have access to and will leverage the traffic signal phase and timing (SPaT) information through V2I communication.

The diagram of the proposed Eco-CACC scheme is presented in Fig. 1. The remainder of this section describes the vehicle dynamics and energy consumption model used in our study.

2.1 Vehicle Dynamics

In this paper, a simplified longitudinal vehicle dynamics model is used as

$$m \frac{dv}{dt} = F_t - f, \quad (1)$$

where m , v , F_t and f are the vehicle’s total mass, velocity, total traction force and total resistance, respectively. The vehicle’s total resistance is calculated as follows

$$f = F_a + F_{rl} + F_g \\ = 0.5C_d A \rho v^2 + \mu mg \cos \theta + mg \sin \theta, \quad (2)$$

where F_a , F_{rl} and F_g are aerodynamic resistance, rolling resistance and grade resistance, respectively. The constant C_d represents drag coefficient, A is the projected frontal area of the vehicle, ρ is the air density, μ is the friction coefficient and θ is the road grade, which is set to zero in this paper. The required torque T can be calculated using (1) and (2), thereby

$$T = \frac{r}{\epsilon_0 \eta_d} (0.5 C_d A \rho v^2 + \mu mg \cos \theta + mg \sin \theta + ma), \quad (3)$$

where r is the wheel’s radius, ϵ_0 is the gear reduction ratio and η_d is the mechanical efficiency of the drivetrain.

2.2 Electric Vehicle Energy Consumption Model

The following comprehensive power-based electric vehicle’s energy consumption model is used to calculate energy consumption (Fiori et al., 2016):

$$P = (ma + \mu mg \cos \theta + 0.5 C_D \rho A v^2 + mg \sin \theta) v. \quad (4)$$

Thus, the energy consumed by an electric vehicle, denoted by E , over a time span of Δt is calculated as

$$E = \begin{cases} (P \Delta t / 3600) / \eta_{tr} & \text{Traction;} \\ (P \Delta t / 3600) / \eta_{re} & \text{Recuperation,} \end{cases} \quad (5)$$

where η_{tr} is the motor efficiency and η_{re} is the recuperation efficiency. In this paper, the motor efficiency η_{tr} for every step is interpolated from the motor map, which is a lookup table containing the motor efficiency values for different combinations of torque and rotation speed.

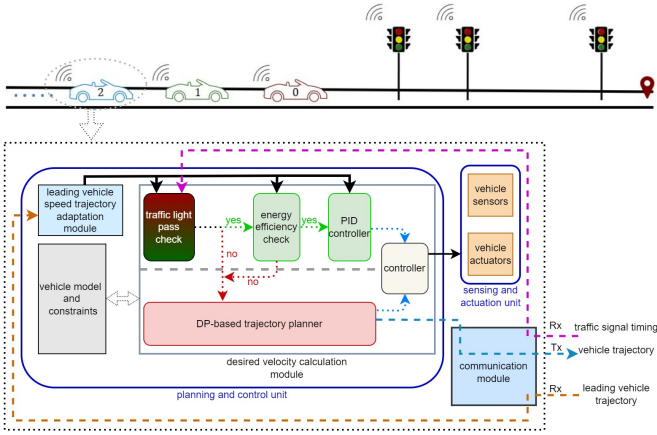


Fig. 1. Diagram of the proposed Eco-CACC design. In this structure, a platoon of multiple CAVs is considered, traveling along an arterial with several signalized intersections. Each vehicle plans the trajectory itself or follows its preceding vehicle depending on the circumstances (whether the CAV can pass the intersections following its preceding vehicle or if its average energy efficiency through the whole route is lower than a predefined threshold).

3. ECO-CACC STRATEGY

In this section, we provide details on our proposed approach for Eco-driving trajectory planning, as well as a PID-based CACC scheme.

3.1 DP-based Eco-driving Trajectory Planning

The proposed trajectory planning approach is formulated as a constrained optimization problem and solved using dynamic programming (DP). The objective is to find the optimal trajectory profile for the leader vehicle along an urban route to balance the energy consumption, mobility and passenger comfort and enable the vehicle to pass intersections without stopping. It should be noted that the proposed algorithm is distance-based, and so the entire route is discretized into N distance steps. Variable s_k denotes the k^{th} step distance. The state variables include the velocity and time, and the control variable is acceleration that governs state space changes. In addition, the following constraints need to be considered based on the vehicle's acceleration limitation, bound on traveling time, and the road speed limit:

$$v_k \in [0, v_{\max,k}], t_k \in [t_{\min,k}, t_{\max,k}], a_k \in [a_{\min}, a_{\max}],$$

where variable v_k denotes the velocity in k^{th} step, t_k denotes the time span in k^{th} step, and a_k denotes the acceleration in k^{th} step. Hence, the optimization problem is formulated as

$$\begin{aligned} \min_{a_k} \sum_{k=1}^N [\alpha E(v_k, a_k) + \beta M(v_k) + \gamma C(a_k)] + \mu P_{red}, \\ \text{subject to: } M(v_k) = (ds/(v_k + 0.01) - ds/v_{des})^2, \\ C(a_k) = a_k^2, \end{aligned} \quad (6)$$

$$\mu = \begin{cases} 1; & t_k |_{v_k, a_k, k=\delta} \in [t_{red}, t_{green}), \\ 0; & t_k |_{v_k, a_k, k=\delta} \in [t_{green}, t_{red}) \text{ or } k \neq \delta, \end{cases}$$

$$\begin{aligned} v_{k+1} &= \sqrt{v_k^2 + 2 a_k (s_{k+1} - s_k)}, \\ t_{k+1} &= t_k + 2 (s_{k+1} - s_k) / (v_{k+1} + v_k), \end{aligned}$$

where $E(v_k, a_k)$ denotes k^{th} step energy consumption given v_k and a_k . $M(v_k)$ represents the mobility, in which v_{des} denotes the desired velocity along the urban route and parameter ds represents the distance step and is set to $1 m$ in this paper. $C(a_k)$ denotes the passenger comfort defined as the square of acceleration (Oh and Peng, 2018). α , β and γ are the weights for energy consumption, mobility and passenger comfort, respectively. Furthermore, P_{red} is the penalty for the case that a vehicle runs into red light at the traffic signal. Parameter μ determines whether or not to add the penalty P_{red} . t_{green} denotes the moment at which the traffic light switches from red to green while t_{red} denotes the moment when the traffic light switches from green to red. According to aforementioned definitions, the interval $[t_{green}, t_{red})$ denotes the traffic light's green phase (effective green) while $[t_{red}, t_{green})$ denotes the traffic light's red phase. Note the green phase and red phase refer to effective green duration and effective red duration that absorb the yellow interval. Furthermore, δ is used to denote the number of distance steps to arrive at traffic light from the current vehicle position.

3.2 PID-based CACC Scheme

Due to the computational complexity of the DP algorithm, it is used to find the optimal Eco-driving trajectory profile of the leader vehicle(s) while the following vehicles in the platoon aim to follow their respective preceding vehicles at the desired distance $d_{r,i}$ with the same speed as their predecessor using a PID controller. Let the platoon includes m vehicles, with d_i denoting the inter-distance between a vehicle i and its preceding vehicle $i-1$ and v_i the velocity of vehicle i . A constant-time spacing policy is adopted for the following vehicle as follows

$$d_{r,i}(t) = r_i + h v_i(t), \quad 2 < i < m, \quad (7)$$

where $d_{r,i}(t)$ is the desired inter-distance of vehicle i from vehicle $i-1$, h is the time headway constant, and r_i is the standstill distance. The following vehicle model is considered

$$\begin{pmatrix} \dot{d}_i \\ \dot{v}_i \\ \dot{a}_i \end{pmatrix} = \begin{pmatrix} v_{i-1} - v_i \\ a_i \\ -\frac{1}{\tau} a_i + \frac{1}{\tau} u_i \end{pmatrix}, \quad 2 \leq i \leq m, \quad (8)$$

where a_i is the i^{th} vehicle's acceleration, u_i is the input, and τ is the time constant of driveline dynamics. The spacing error $e_i(t)$, which is the difference between the current inter-vehicle distance and its desired value, is calculated as

$$\begin{aligned} e_i(t) &= d_i(t) - d_{r,i}(t) \\ &= (s_{i-1}(t) - s_i(t) - L_i) - (r_i + h v_i(t)), \end{aligned} \quad (9)$$

where $s_i(t)$ is the i^{th} vehicle's position and L_i is its length. The control action for the following vehicle is given as (Ploeg et al., 2011)

$$\dot{u}_i = -\frac{1}{h} u_i + \frac{1}{h} (k_p e_i + k_d \dot{e}_i + k_a \ddot{e}_i) + \frac{1}{h} u_{i-1}, \quad (10)$$

where $K = [k_p \ k_d \ k_a]$ are the gains of the PID feedback controller. In simulation studies (see Section 4), the PID gains are set to be $K = [0.001 \ 10 \ 1]$ for both scenarios.

3.3 Proposed Eco-CACC Strategy

Our ultimate goal of designing the control strategy for a platoon is to find an optimal solution for the entire platoon, which allows all vehicles in the original platoon to

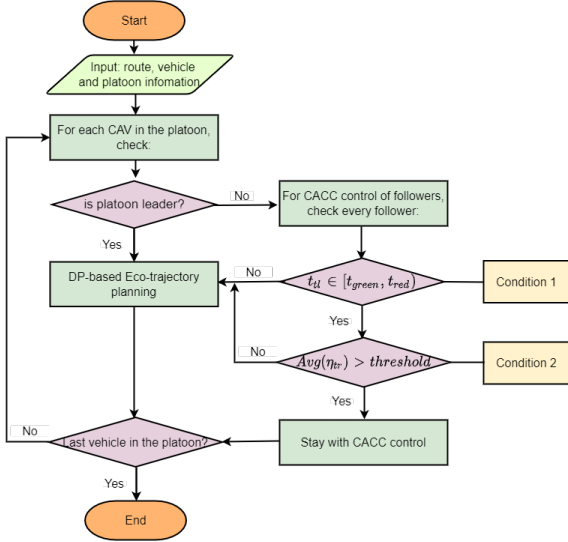


Fig. 2. The proposed control strategy for a heterogeneous platoon in urban environments.

pass all traffic lights with no stops while maintaining a balance between the platoon’s energy consumption, mobility and passenger comfort. However, the optimal trajectory for the leading vehicle in a heterogeneous platoon is not necessarily optimal for the remainder of the CAVs due to the traffic light phase changes or vehicle heterogeneity. Instead, a control strategy is introduced for each vehicle in the platoon to reach a near-optimal solution. Each follower vehicle may decide to either follow its predecessor using a PID-based CACC scheme or employ DP to find the proper trajectory for itself.

The block diagram showing details of the proposed strategy is presented in Fig. 2. The control strategy uses route information, including traffic light location and SPaT information. The trajectory planning for the leader vehicle is implemented using DP to balance energy consumption, mobility and passenger comfort. After the leader’s trajectory planning, PID-based CACC is employed for each follower vehicle in light of the low computational cost. However, two conditions need to be considered for a long heterogeneous platoon. First, if the onset of red light stops one or more follower vehicles, the energy consumption will increase due to the deceleration and stopping of those vehicles. Thus, each follower CAV checks ‘Condition 1’, that is, whether or not it can pass all the intersections at green when following its preceding vehicle; if ‘Condition 1’ is not satisfied, then the CAV will be set as a ‘New Leader’, and its trajectory will be re-planned using DP. Second, because of the heterogeneity of CAVs in the platoon, the leader vehicle’s optimal trajectory is not necessarily suitable for all the follower vehicles. Thus, each follower vehicle in the platoon checks whether or not it satisfies this ‘Condition 2’; if the average efficiency $Avg(\eta_{tr})$ falls below a preset threshold, then it becomes a ‘New Leader’ and will plan its trajectory using DP. This Eco-CACC control strategy applies to all vehicles in the platoon.

4. SIMULATION RESULTS AND DISCUSSION

A platoon containing 20 heterogeneous electric vehicles is considered in the simulation study. Among the 20 vehicles, the 16th vehicle is designated as a heavy-duty vehicle

Table 1. Electric vehicle model parameters used in the simulation study.

Parameter	Light	Heavy	Parameter	Light	Heavy
m	1400kg	1900kg	C_d	0.36	0.7
μ	0.008	0.008	ρ	1.2 kg m^{-3}	1.2 kg m^{-3}
A	4.5 m^2	8.5 m^2	ϵ_0	3.92	3.92
r	0.282 m	0.282 m	η_d	0.95	0.95

denoted by HC. The parameters of all CAVs are presented in Table 1, where ‘Light’ refers to light-weight vehicles, and ‘Heavy’ refers to heavy-duty vehicles. Besides the mass, the frontal area of the vehicle, aerodynamic drag coefficient and motor efficiency map, the difference between the light-weight vehicles and the heavy-duty vehicle also includes the maximum acceleration, which is set to $4 \text{ m}^2/\text{s}$ for the light-weight vehicles and $2.5 \text{ m}^2/\text{s}$ for the heavy-duty vehicle. A 2500-meter-long urban arterial with two pre-timed traffic lights located at distances 600 m and 2000 m along the route is considered to evaluate the performance of the proposed Eco-CACC strategy. The first traffic light at 600 m has 72-second effective green for the through phase along the route, followed by 88-second effective red. The second traffic light at 2000 m has 75-second effective green, followed by 95-second effective red. The maximum speed of the arterial is 60 km/h. The distance step ds for this simulation is set to 1 m. Two scenarios are evaluated. In Scenario I, only vehicle mobility and passenger comfort are considered while Scenario II considers energy consumption as well.

4.1 Eco-CACC Considering Mobility and Passenger Comfort (Scenario I)

In this scenario, only vehicle mobility and passenger comfort are considered when carrying out the DP-based trajectory planning for leader vehicles (i.e., $\alpha = 0$ in (6)). By implementing the proposed Eco-CACC strategy for the entire heterogeneous platoon, location, velocity and acceleration profiles for each vehicle are shown in the first, second and third subplots in Fig. 3, respectively. Letter ‘L’ denotes leader(s) in the platoon whose trajectories are planned using DP, and letter ‘F’ indicates follower(s) in the platoon, whose trajectories are obtained through the PID-based CACC scheme. Using the proposed Eco-CACC strategy, the trajectory of the leader vehicle ‘1st L’ is determined using the DP algorithm; then vehicles ‘2nd F’ - ‘11th F’ follow their respective predecessors’ trajectories using the PID-based CACC controller. Checking Condition 1 for the 12th vehicle indicates that it cannot pass at green if it follows its predecessor using the PID controller. Thus, 12th CAV becomes a new leader and is then renamed as ‘12th L’, and 13th-15th follower vehicles (‘13th F’-‘15th F’) follow it. By checking Condition 2, the trajectory for 16th vehicle (‘16th HC’), which is a heavy-duty vehicle, is re-planned, and vehicles ‘17th F’-‘20th F’ follow 16th HC’s trajectory by employing a PID controller.

When only mobility and passenger comfort are considered in the objective function (i.e., in (6)), the average traveling time is 234.86 s/veh, while the maximum allowed traveling time is set to 1000 s. The maximum velocity in the platoon reaches 51 km/h. We note that the accelerations for the light-weight vehicles remain below the maximum acceleration limit of 3.5 m/s^2 while the heavy-duty vehicle reaches the maximum acceleration limit of 2.5 m/s^2 . The energy consumption of each vehicle in Sce-

Table 2. Comparison between Scenarios I, II

Scenario	average energy consumption	average traveling time
I	1812.965 Wh/veh	234.86 s/veh
II	1473.99 Wh/veh	305.85 s/veh

nario I is shown in Fig. 5. In this scenario, although the traveling time for vehicles is relatively short, the energy aspect was completely disregarded, leading to relatively high energy consumption. Besides, the energy consumption for 16th HC is much higher (2,953.2 Wh) than other vehicles in the platoon that all consumed less than 1850 Wh of energy along the entire route. To balance mobility and sustainability, Scenario II is then studied.

4.2 Eco-CACC Considering Energy Consumption, Mobility and Passenger Comfort (Scenario II)

In this scenario, besides the mobility and driver comfort aspects, energy consumption is also considered when carrying out the Eco-trajectory planning. Fig. 4 depicts the results of the second scenario. Using the proposed Eco-CACC strategy, the trajectory of the leading vehicle '1st L' is optimized using DP, and the follower vehicles '2nd F'-'10th F' follow their respective predecessor's trajectory using a PID-based CACC scheme. Then, checking Condition 1 for the 11th vehicle indicates that it cannot pass at green if it follows its predecessor using the PID controller. Thus, 11th vehicle becomes a new leader and is hence renamed as '11th L', and 12th- 15th follower vehicles ('12th F'-'15th F') follow it afterward. After checking Condition 2 for 16th vehicle (HC), which is a heavy-duty vehicle, its trajectory is re-planned, and its follower vehicles '17th F'-'20th F' then follow its trajectory afterward using the PID-based CACC scheme.

With energy consumption considered in this scenario, the average total traveling time is 305.85 s/veh, while the maximum allowed traveling time is set to 1000 s. The maximum velocity reaches 42 km/h and the maximum acceleration reaches 3.5 m/s². In order to maintain a desired velocity to balance its energy consumption, mobility and passenger comfort while passing the green phase, heavy-duty vehicle '16th HC' exhibits oscillatory (acceleration and deceleration) behavior around both intersections. Noticeable energy consumption reduction for the heavy-duty vehicle 16th HC is observed from 2953.2 Wh in Scenario I to 1265.7 Wh in Scenario II. Each vehicle's energy consumption in this scenario is shown in Fig. 5. Table 2 summarizes the results of Scenario I and Scenario II. Compared with Scenario I, the platoon in Scenario II sacrifices about 71 s on average (about 30%) to trade with about 339 Wh/veh energy consumption reduction (about 19%). It is noted that the traveling time is not only related to vehicle characteristics but also traffic signal timings and travel start time of vehicles since part of the cost function considers whether a vehicle can pass at the green phase of the traffic light.

5. CONCLUSION

This paper proposes an Eco-CACC strategy for a platoon of heterogeneous electric vehicles in urban environments. The proposed method combines Eco-trajectory planning and CACC, resulting in a near-optimal solution for long platoons along an arterial by balancing energy consumption, mobility and passenger comfort. The trajectory planning problem for the leader vehicle(s) is solved using dynamic programming while follower vehicles employ a

PID controller to follow their respective predecessors. The proposed approach also considers traffic SPaT information while solving the dynamic programming problem. With the proposed control strategy, vehicles avoid stopping at traffic lights, thereby improving the energy economy of the entire platoon. Our simulation study shows that adding energy consumption component in the objective function helps to balance mobility and energy consumption of the platoon, resulting in lower energy consumption with slightly increased traveling time. It is noted that due to our discrete distance space when formulating the problem, the acceleration profile may exhibit an oscillatory behavior without the passenger comfort term in the objective function.

REFERENCES

- Bengler, K., Dietmayer, K., Farber, B., Maurer, M., Stiller, C., and Winner, H. (2014). Three decades of driver assistance systems: Review and future perspectives. *IEEE Intelligent transportation systems magazine*, 6(4), 6–22.
- Fiori, C., Ahn, K., and Rakha, H.A. (2016). Power-based electric vehicle energy consumption model: Model development and validation. *Applied Energy*, 168, 257–268.
- Huang, Y., Ng, E.C., Zhou, J.L., Surawski, N.C., Chan, E.F., and Hong, G. (2018). Eco-driving technology for sustainable road transport: A review. *Renewable and Sustainable Energy Reviews*, 93, 596–609.
- Jia, D., Ngoduy, D., and Vu, H.L. (2018). A multi-class microscopic model for heterogeneous platoon with vehicle-to-vehicle communication. *Transportmetrica B: Transport Dynamics*.
- Kreuzen, C. (2012). Cooperative adaptive cruise control: using information from multiple predecessors in combination with MPC. *Delft University of Technology*.
- Ma, F., Yang, Y., Wang, J., Li, X., Wu, G., Zhao, Y., Wu, L., Aksun-Guvenc, B., and Guvenc, L. (2021). Eco-driving-based cooperative adaptive cruise control of connected vehicles platoon at signalized intersections. *Transportation Research Part D: Transport and Environment*, 92, 102746.
- Moser, D., Waschl, H., Kirchsteiger, H., Schmied, R., and Del Re, L. (2015). Cooperative adaptive cruise control applying stochastic linear model predictive control strategies. In *2015 European Control Conference (ECC)*, 3383–3388. IEEE.
- Mosharafian, S., Razzaghpour, M., Fallah, Y.P., and Velni, J.M. (2021). Gaussian process based stochastic model predictive control for cooperative adaptive cruise control. In *2021 IEEE Vehicular Networking Conference (VNC)*, 17–23. IEEE.
- Oh, G. and Peng, H. (2018). Eco-driving at signalized intersections: What is possible in the real-world? In *2018 21st International Conference on Intelligent Transportation Systems (ITSC)*, 3674–3679. IEEE.
- Ploeg, J., Scheepers, B.T., Van Nunen, E., Van de Wouw, N., and Nijmeijer, H. (2011). Design and experimental evaluation of cooperative adaptive cruise control. In *2011 14th International IEEE Conference on Intelligent Transportation Systems (ITSC)*, 260–265. IEEE.
- Sanguinetti, A., Kurani, K., and Davies, J. (2017). The many reasons your mileage may vary: Toward a unifying typology of eco-driving behaviors. *Transportation*

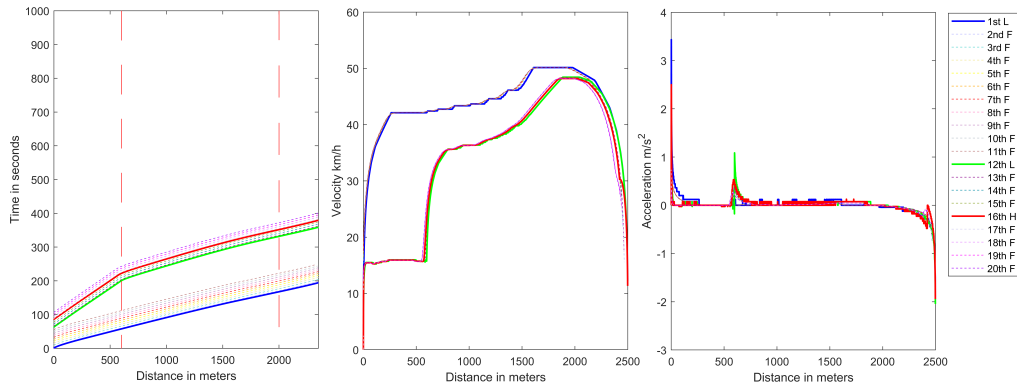


Fig. 3. Eco-driving trajectory planning of heterogeneous platoon in Scenario I. The average traveling time for this scenario is 234.86 s/veh and the maximum velocity in the platoon is below 51 km/h .

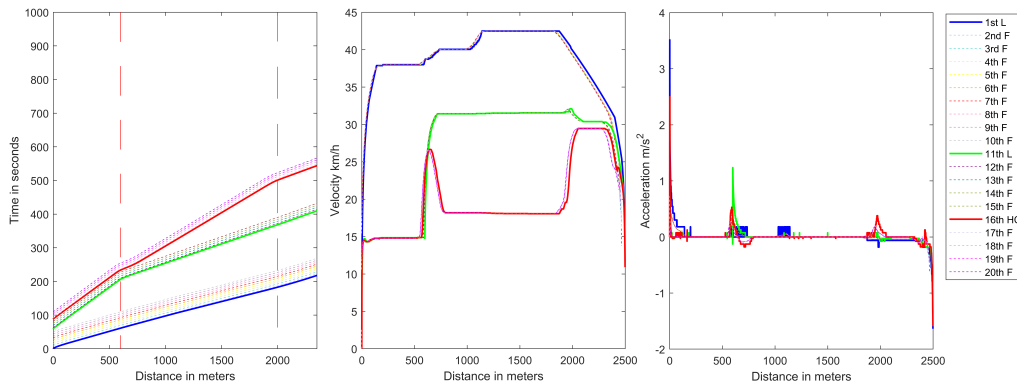


Fig. 4. Eco-driving trajectory planning of heterogeneous platoon in Scenario II. The average traveling time for this scenario is 305.85 s/veh and the maximum velocity in the platoon is about 42.5 km/h .

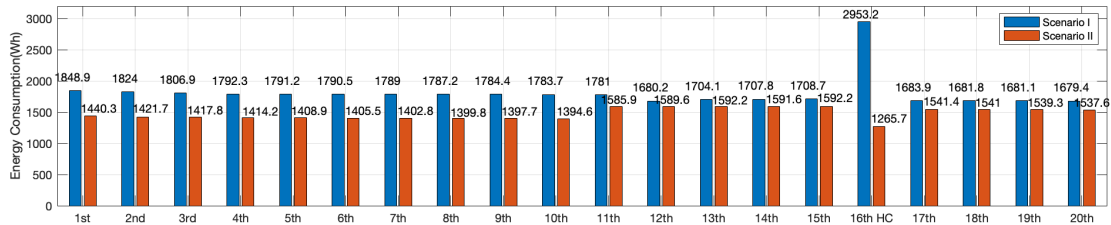


Fig. 5. Energy consumption for each vehicle throughout the urban route in two scenarios. Energy consumption for CAVs in Scenario II is relatively lower compared to Scenario I due to the energy consumption term added in (6).

Research Part D: Transport and Environment, 52, 73–84.

Teichert, O., Koch, A., and Ongel, A. (2020). Comparison of eco-driving strategies for different traffic-management measures. In *2020 IEEE 23rd International Conference on Intelligent Transportation Systems (ITSC)*, 1–7. IEEE.

Wang, C. and Nijmeijer, H. (2015). String stable heterogeneous vehicle platoon using cooperative adaptive cruise control. In *2015 IEEE 18th International Conference on Intelligent Transportation Systems*, 1977–1982. IEEE.

Wang, Z., Wu, G., and Barth, M.J. (2019). Cooperative eco-driving at signalized intersections in a partially connected and automated vehicle environment. *IEEE Transactions on Intelligent Transportation Systems*, 21(5), 2029–2038.

Wu, X., He, X., Yu, G., Harmandayan, A., and Wang, Y. (2015). Energy-optimal speed control for electric

vehicles on signalized arterials. *IEEE Transactions on Intelligent Transportation Systems*, 16(5), 2786–2796.

Yang, H., Rakha, H., and Ala, M.V. (2016). Eco-cooperative adaptive cruise control at signalized intersections considering queue effects. *IEEE Transactions on Intelligent Transportation Systems*, 18(6), 1575–1585.

Zhai, C., Chen, X., Yan, C., Liu, Y., and Li, H. (2020). Ecological cooperative adaptive cruise control for a heterogeneous platoon of heavy-duty vehicles with time delays. *IEEE Access*, 8, 146208–146219.

Zhao, W., Ngoduy, D., Shepherd, S., Liu, R., and Papa-georgiou, M. (2018). A platoon based cooperative eco-driving model for mixed automated and human-driven vehicles at a signalised intersection. *Transportation Research Part C: Emerging Technologies*, 95, 802–821.